



Metaalwerken De Cock n.v.



Drevendaal 12
2860 Sint-Katelijne-Waver, Belgium

Tel. +32 15 31 40 03
Fax +32 15 31 18 02

www.metaalwerkendecock.be
info@metalworksdc.be



Metaalwerken De Cock n.v.



Located in Sint Katelijne Waver, near the E19 motorway, and as such ideally situated on the central Brussels-Louvain-Antwerp axis.

Since the company's founding in 1920, we have been an independent service-oriented supplier primarily active in the **metalworking** industry, capable of creating all conceivable constructions in **steel, aluminium and stainless steel.**

Our core business consists of delivering **total solutions** to our clients, giving the utmost attention to their specific requirements. The company has obtained ISO 9001 version 2008 certification, as well as DIN EN ISO 3834-2 welding standard. The continuous improvement of products and services is central to the policy of the company. **Quality, flexibility** and the ability to create the most complex parts and assemblies lead directly to our aim of achieving customer satisfaction. **Prototypes, piecework, runs, custom work, and projects** are all part of our repertoire.

Sheetworking,

a specialised division delivers a wide range of sheetwork using

- three laser cutting machines, all of them using a variety of materials, inserts and other accessories.
- the high speed plasma cutting NERTAJET HP with potential for large thicknesses
- four CNC-driven folding benches,
- a CNC-driven punch,

Machining on CNC-driven lathes and milling machines makes it possible for us to make all conceivable parts in a variety of metals.

Recently, we introduced a fully automatic lathe Mori Seiki and three Mazak machining centers, allowing us to cost-effectively and with great accuracy almost fully automatically produce around the clock.

Welding

according to DIN and ISO 3834-2 standards, is done by certified welders, using MIG and TIG welding procedures and a CNC-driven welding robot for large series. Pre-assembly of units completes the cycle to end-product or semi-manufactured goods.

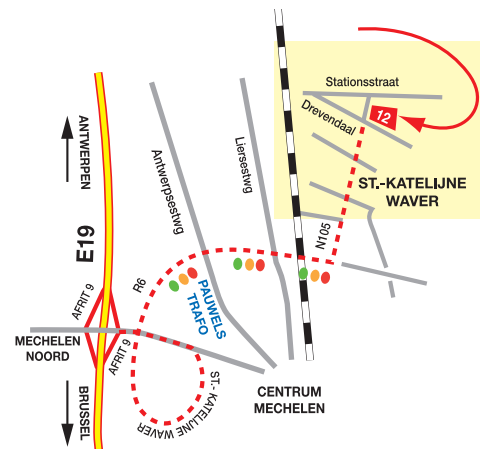


Linda Monballiu
Director

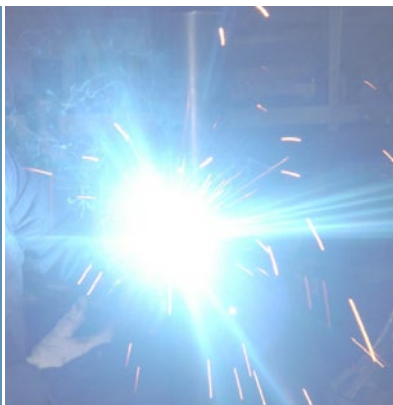
Willy Lefever
Managing Director

QuickScan:

- Our services
- Sheetworking
- Machining division
- Welding division
- Pre-assembly and Just in Time
- Creations of years gone by



**“The core competency of our company
is delivering total solutions,
in an efficient, economical and
high-quality fashion”**



Metaalwerken De Cock n.v

Drevendaal 12

2860 Sint-Katelijne-Waver

Belgium

Tel. +32 15 31 40 03

Fax +32 15 31 18 02

www.metaalwerkendecock.be

info@metalworksdc.be



Metaalwerken De Cock n.v.

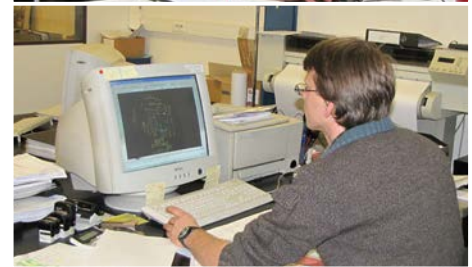
- **Customer service and order processing**

This division ensures that each order is tracked closely so that the order status can be reported to customers at all times to ensure timely delivery

- **Quality**

Our continuous search for customer satisfaction is supported by a quality-control system that makes it possible to ensure that tolerances, dimensions and special specifications are adhered to at every stage.

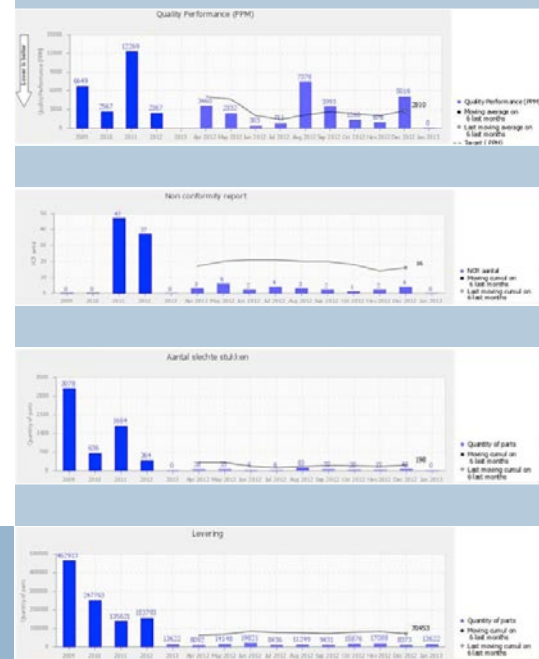
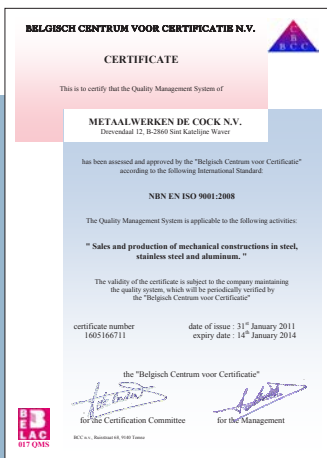
The company has obtained the ISO 9001 - version 2008 certificate, as well as the DIN EN ISO 3834-2 welding standard.



The continuous improvement of our products and services is key to the policy of the company. We work very closely with the customer in order to maximize customer satisfaction and we are inviting you to scrutinize the entire "supply chain" from order to payment with us in order to detect points of attention and improvement. Internal and external audits of our policies and way of operating allow us to stay on track always and follow up and implement points of improvement.

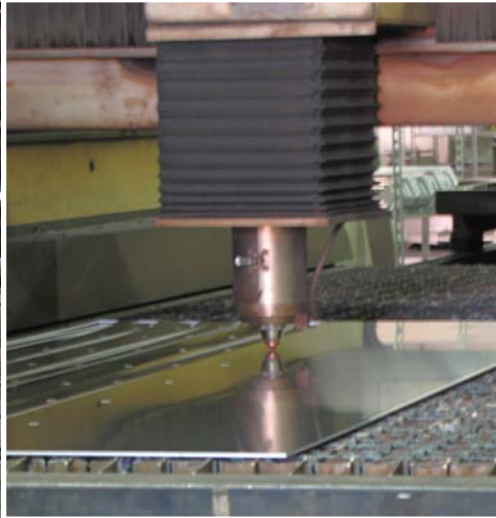
• Service

For our customers we offer a stocking service to ensure rapid delivery when the need arises. Our ultimate goal is to become your partner and not only your supplier.





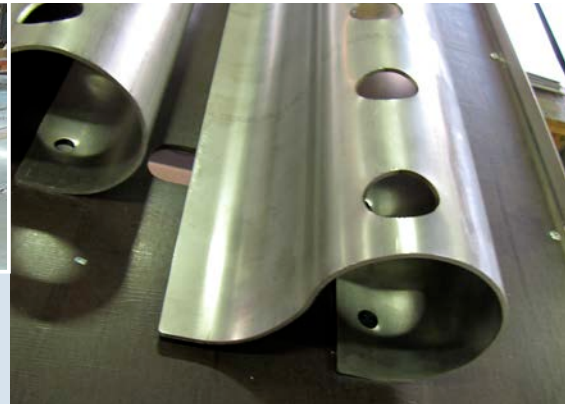
Metaalwerken De Cock n.v.

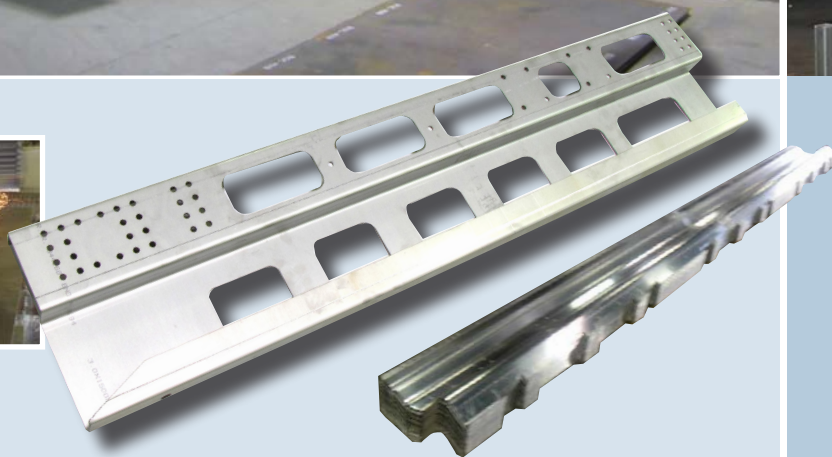
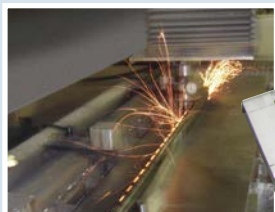


• Sheetworking

A specialised division manufactures a wide variety of sheetwork using:

- three laser cutting machines, all of which use a variety of materials, inserts and other accessories.
- a high speed plasma cutter NERTAJET HP with interchangeable CPM torch nose and control of the HPC digital process, with opportunities for large thicknesses, cutting quality range 3-4 according to ISO 9013, burr-free cut, immediately weldable pieces,
- four CNC-driven folding benches,
- a CNC-driven punch,
- various mechanical and hydraulic presses
- a roller bench
- a sander





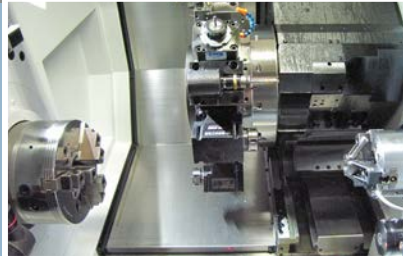


Metaalwerken De Cock n.v.

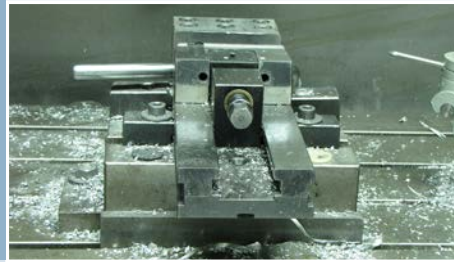
• Machining

Our modern equipment includes CNC-controlled lathes and milling machines allowing us to manufacture all kinds of components efficiently.

- A Mori Seiki automatic lathe with automated supply and discharge, double spindle and driven tools, enables us to handle big series in a very competitive way. This technology gives us the competitive advantage to small tolerances and to work at high speeds with short lead times.



- Three Mazak machining centers working range up to 3 m in length in one setup, give us a high productivity by the minimal changeover times.
- The robust machines guarantee extreme accuracy, twice better than the ISO 230 standard.





Metaalwerken De Cock n.v.



• Welding

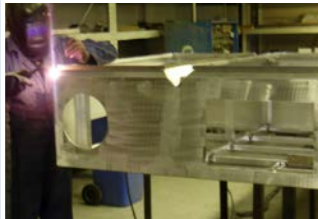
For our welding shop we are DIN and ISO 3834-2 certified.

This certification positioned us at the top of the welding industry.

Our future goal is to obtain level 1.

From order intake to delivery all steps are carried out following quality procedures: working with certified welders, welding from certified welding instructions and procedures, using qualified MIG and TIG welding processes and for large series using our CNC welding robot.

Making sure, always, that all requirements regarding identification and traceability are met. Supplying products conform to all legal requirements and product specifications.



Certificate

Inspection of a Welding Shop

Certificate no.: 01 202 B/A-12 0087/Rev.00

Name and address of the
manufacturer: **Metaalwerken De Cock N.V.**
Drevendaal 12
B - 2860 Sint Katalijne Waver

It is hereby certified that the manufacturer has furnished proof of the comprehensive quality requirements to be met for his welding activity.

Specifications: **DIN EN ISO 3834-2**
Test Report no.: **B124051**

Scope: The scope of the inspection and other relevant data are given in the test report.

Manufacturing Plant: **Metaalwerken De Cock N.V.**
Drevendaal 12
B - 2860 Sint Katalijne Waver

Valid until: **June 25, 2015**

Cologne, July 13, 2012

Dipl.-Ing. S. Krell



TÜV Rheinland-Certification Body for
Pressure Equipment
TÜV Rheinland Industrie Service GmbH
Am Grauen Stein, D-51105 Köln

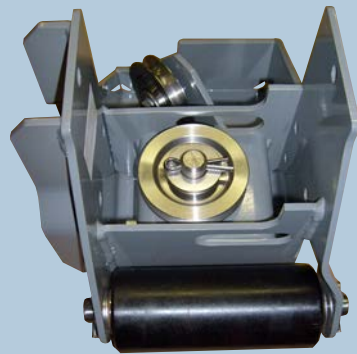
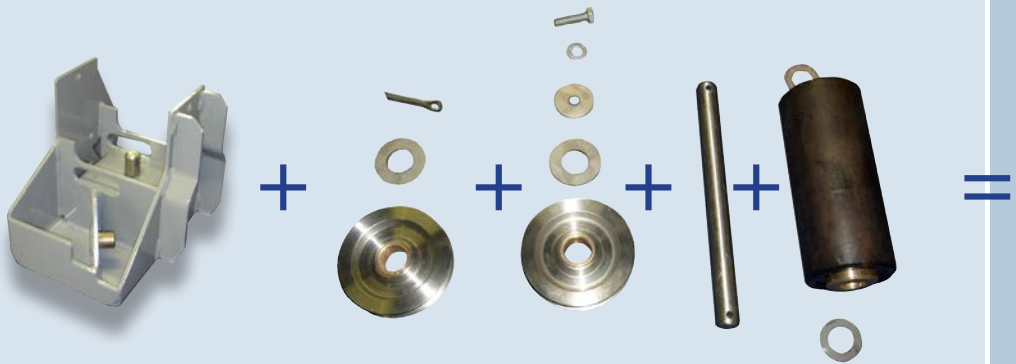
M-012-Rev1

- **Pre-assembly**

Clients are increasingly asking us not only to manufacture the parts but also to take charge of the assembly. In doing so, we are able to produce more efficiently and expand our services to a higher level in the supply chain. A win-win situation for both parties.

- **Just-in-time delivery**

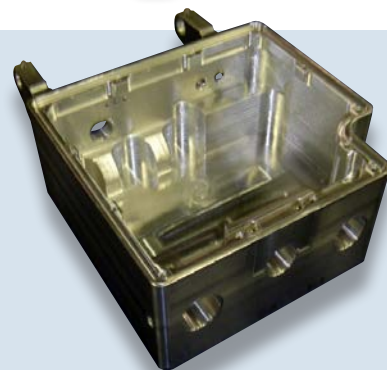
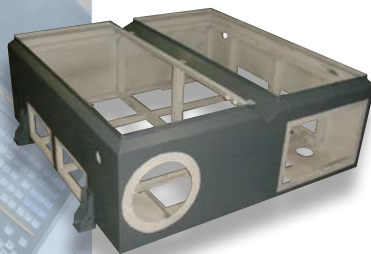
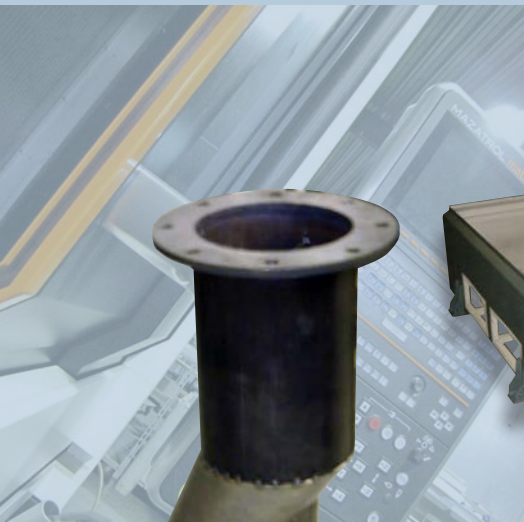
For clients with whom we have a long-term contract, we maintain an inventory of parts in stock and are therefore able to deliver 'Just in Time'. That also allows us to optimise our own production and to serve our clients quickly with no inventory costs for them.

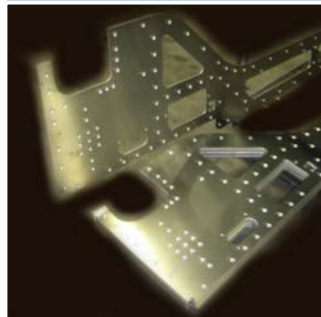




Metaalwerken De Cock n.v.

- Realisations

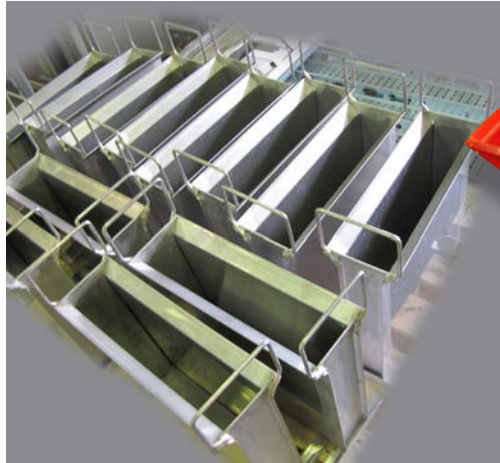






Metaalwerken De Cock n.v.

- Realisations







Metaalwerken De Cock n.v.

Drevendaal 12

2860 Sint-Katelijne-Waver, Belgium

Tel. +32 15 31 40 03

www.metaalwerkendecock.be

Fax +32 15 31 18 02

info@metalworksdc.be